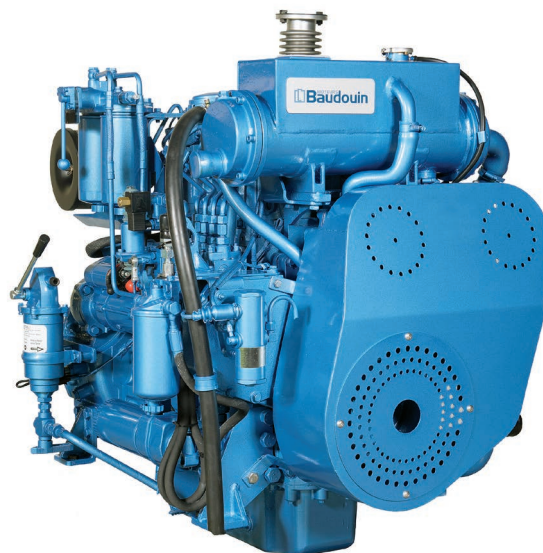


Marine Engines

4 W105M

4 Stroke diesel engine, direct injection

Bore and stroke	105 x 130 mm
Number of cylinders	4 in line
Total displacement	4,5 litres
Compression ratio	18/1
Engine rotation (ISO 1204 standard)	counterclockwise
Idle speed	650 rpm
Flywheel housing	SAE 3
Flywheel	SAE 11,5"



Customer benefits

Continuous compact power with reference performances in its category

Global environment care with low exhaust emissions and controlled fuel consumption at any running cycle

Simple technology with mechanical injection

Life cycle cost efficiency with extended mean time between overhauls (MBTO)

Rated power - Fuel consumption

Duty	kW	hp	rpm	Fuel consumption g/kWh	Peak torque / speed (N.m / rpm)
P2	95	130	2100	214	535 / 1500

	P2
Application	continuous
Engine load variations	numerous
Average engine load factor	30 to 80%
Annual working time	3000 to 5000 h
Time at full load	8 h each 12 h

Power definition

Standard ISO 3046/1

Reference conditions

Ambient temperature	25 °C / 77 °F
Barometric pressure	100 kPa
Relative humidity	30%R
Raw water temperature	25 °C / 77 °F

Fuel oil

Relative density	0,840 ± 0,005
Lower calorific power	42 700 kJ/kg
Consumption tolerances	0 ± 5%
Inlet limit temperature	35 °C / 95 °F

Our ratings also comply with classification societies maximum temperature definition without power derating.

Ambient temperature	45 °C / 113 °F
Raw water temperature	32 °C / 90 °F

Standard equipment

Cooling system

Fresh / raw water heat exchanger with integrated thermostatic valves and expansion tank
Cast iron centrifugal fresh water pump, mechanically driven
Bronze self-priming raw water pump, mechanically driven

Lubrication system

Full flow screwable oil filters
Fresh water cooled lube oil cooler

Fuel system

In-line injection pump with flanged mechanical governor
Double wall injection bundle
Duplex fuel filters replaceable while engine running
Water separator

Intake air and exhaust system

Insulated exhaust gas manifold
Turbo blower with insulated turbine housing
Low water temperature cooled intake air cooler

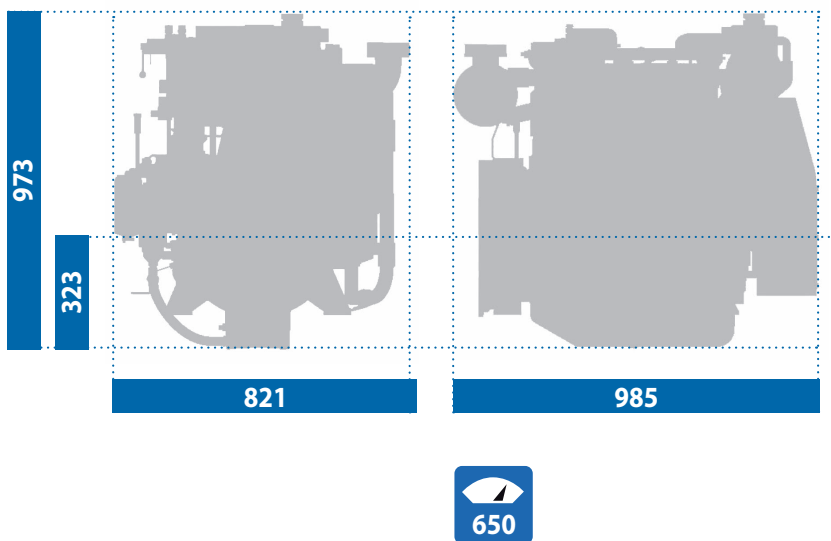
Electrical system

Voltage: 24Vcc insulated
Electrical starter on flywheel crown
55A battery charger

Optional equipment

Cooling system adapted for box / keel cooling
Connection for emergency raw water circuit
Resilient mounts under engine
Exhaust water injection after turbocharger
Contact us for full list of options available

Dimensions and dry weight (mm / kg)



Performance

P2 - 95 kW - 130 hp @2100 rpm

